



**U.S. National Ice Center**  
NOAA Satellite Operations Facility  
4231 Suitland Road  
Suitland, MD 20746

## **PRESS RELEASE**

### **FOR IMMEDIATE RELEASE**

Contact: LT Falon Essary, NOAA  
[NIC.PAO@noaa.gov](mailto:NIC.PAO@noaa.gov)  
301-817-3934

### **Iceberg A-69B Has Broken in Half and Calved A-69C**

28OCT2021, Suitland, MD —The U.S National Ice Center (USNIC) confirmed that A-69B has broken into another nameable iceberg, A-69C. A-69C is located at 66°51' South, 59°39' West, in the Weddell Sea. It measures 10 nautical miles on its longest axis and 3 nautical miles on its widest axis.

A-69C was first spotted by USNIC Ice Analyst, Angela Ottoson, and confirmed by USNIC Ice Analyst, Chris Readinger using the Sentinel-1A image shown below.

Iceberg names are derived from the Antarctic quadrant in which they were originally sighted. The quadrants are divided counter-clockwise in the following manner:

A = 0-90W (Bellingshausen/Weddell Sea)    C = 180-90E (Western Ross Sea/Wilkesland)  
B = 90W-180 (Amundsen/Eastern Ross Sea)    D = 90E-0 (Amery/Eastern Weddell Sea)

When first sighted, an iceberg's point of origin is documented by USNIC. The letter of the quadrant, along with a sequential number, is assigned to the iceberg. For example, C-19 is sequentially the 19th iceberg tracked by USNIC in Antarctica between 180-90E (Quadrant C).

Icebergs with letter suffixes have calved from already named icebergs, where the letters are added in sequential order. For example, C-19D is the 4th iceberg to calve off the original C-19 iceberg.

Iceberg positions are analyzed weekly and are available on the USNIC webpage at: [http://www.natice.noaa.gov/Main\\_Products.htm](http://www.natice.noaa.gov/Main_Products.htm)

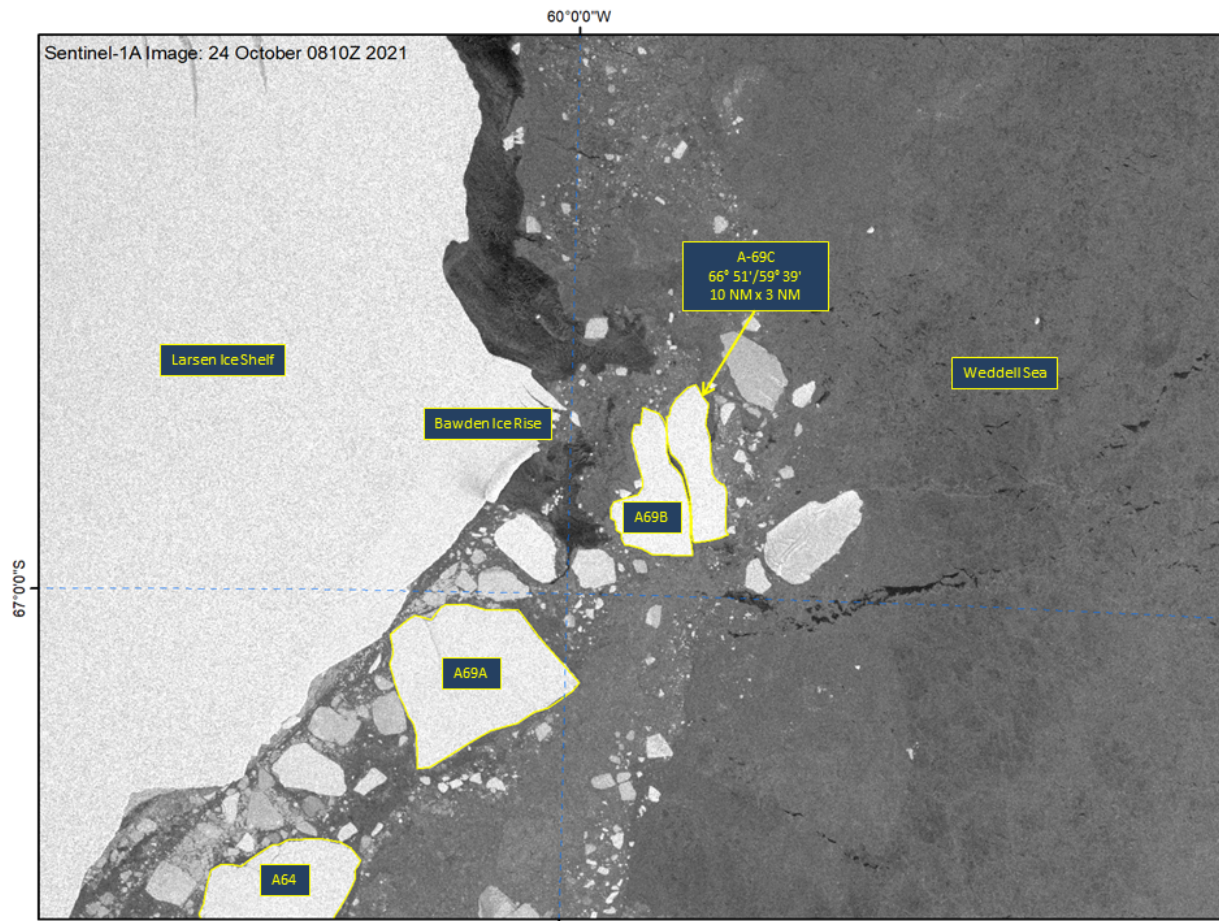


Figure 1: Sentinel-1A image of A-69A, A-69B, A-69C, and A64 in the Weddell Sea October 24, 2021

To access daily products, weekly products, archival data and much more of USNIC data in various formats, visit the USNIC webpage at: <https://usicecenter.gov/Products>

For more information, please contact:

U.S. National Ice Center

Command Duty Officer

E-mail: [nic.cdo@noaa.gov](mailto:nic.cdo@noaa.gov)

Voice: (301) 943-6977

Visit us on Facebook at: <https://www.facebook.com/NationalNavalIceCenter/>



**The U.S. National Ice Center is a multi-agency center operated by the Navy, NOAA, and Coast Guard and provides global to tactical scale ice and snow products, ice forecasting, and related environmental intelligence services for the United States government.**